



Duct air heater

Air Heater

AH-C

AH-C Air Heater

It combines outstanding durability and safety.

Feature

- 1 Stable combustion**
As premixing multi-hole burner uses its own flame holding plate, it burns with a sharp and stable flame and will not be disturbed by the wind speed in the duct.
- 2 Outstanding durability**
The burner body is made of cast iron and has outstanding durability.
- 3 Reliable safety equipment and easy to operate**
It is possible to operate reliable safety control equipment with a single built-in button and to prevent accidents caused by misoperation beforehand.
- 4 Efficient stirring property**
Since short flames are dispersed in a lattice pattern, diffusion and mixing of the combustion gas and the air in the duct can be sufficiently performed. Therefore it is possible to install it on the suction side of the fan.



flame



Main Usage

- Baking furnace (metal coating, plywood, resin, etc.)
- Drying oven (drying of fiber, food, printing, metal draining etc.)
- Heating furnace (preheating furnace, metal preparation furnace, heat set furnace, oil quenching furnace etc.)
- For every hot air disposal

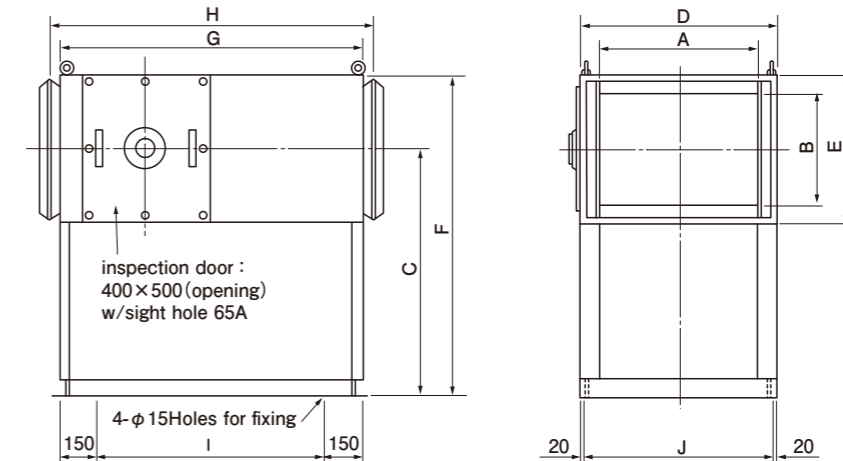
At the time of order, please let us know about the followings.

- Usage
- Necessary heat quantity (kW)
- Hot air temperature (°C)
- Hot air quantity (Nm³/min)
- Hot air static pressure (kPa)
- Voltage (V)
- Frequency (Hz)
- Gas
- The others

Specifications

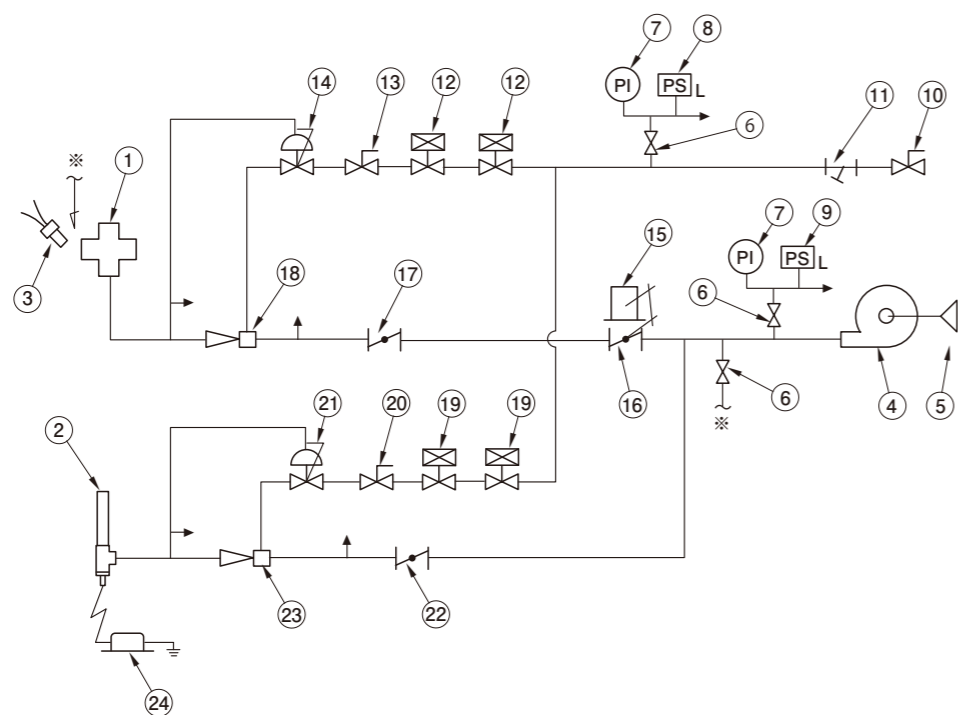
gas type	13A					LPG					
model	AH-15C	AH-30C	AH-45C	AH-60C	AH-90C	AH-20C	AH-30C	AH-40C	AH-60C	AH-80C	AH-100C
maximum combustion capacity (kW)	174	349	523	698	1047	233	349	465	698	930	1163
number of burners	1	2	3	4	6	1	2	2	3	4	6
fuel consumption quantity (m ³ /h)	13.6	27.3	40.9	54.5	81.8	8.3	12.5	16.7	25	33.3	41.7
combustion method	forced premixing										
detection method	ultraviolet phototube										
control method	H/L or PI control by control motor										
pipng connection size	3/4	1 1/2	1 1/2	2	2 1/2	3/4	1	1 1/2	1 1/2	2	2 1/2
gas supply pressure (kPa)	2.0					2.8					
Hot air blowing cross section (mm×mm)	500H×500W	500H×800W	800H×800W	800H×800W	800H×1000W	500H×500W	500H×800W	500H×800W	800H×800W	800H×800W	800H×1100W
Flange (mating flange)	L40×3t	L50×4t				L40×3t	L50×4t				
base	L50×4t	[75×40×5t				L50×4t	[75×40×5t				
frame	L50×4t	[75×40×3.2t				L50×4t	[75×40×3.2t				
inside plate	2.3t SS		3.2t SS			2.3t SS			3.2t SS		
outside plate	1.0t SPC										
heat insulation	MGF50t	MGF75t				MGF50t	MGF75t				
eye bolt	M12		M14			M12			M14		

Overall size



gas type	13A					LPG						
model	AH-15C	AH-30C	AH-45C	AH-60C	AH-90C	AH-20C	AH-30C	AH-40C	AH-60C	AH-80C	AH-100C	
Overall size (mm)	A	500	800	800	800	1100	500	800	800	800	800	1100
	B	500	500	800	800	800	500	500	500	800	800	800
	C	1200	1200	1400	1400	1400	1200	1200	1200	1400	1400	1400
	D	600	950	950	950	1250	600	950	950	950	950	1250
	E	600	650	950	950	950	600	650	650	950	950	950
	F	1500	1525	1875	1875	1875	1500	1525	1525	1875	1875	1875
	G	1120	1400	1400	1400	1400	1120	1400	1400	1400	1400	1400
	H	1200	1500	150	1500	1500	1200	1500	1500	1500	1500	1500
	I	820	1100	1100	1100	1100	820	1100	1100	1100	1100	1100
	J	560	910	910	910	1210	560	910	910	910	910	1210

Fow sheet



No.	parts name	No.	parts name	No.	parts name	No.	parts name	No.	parts name
1	main burner	6	needle valve	11	strainer	16	control valve	21	zero governor
2	pilot burner	7	pressure gauge	12	solenoid valve	17	butterfly valve	22	butterfly valve
3	ultraviolet phototube	8	gas pressure switch	13	ball valve	18	venturi mixer	23	pilot mixer
4	blower	9	air pressure switch	14	zero governor	19	solenoid valve	24	ignition transformer
5	filter	10	ball valve	15	control motor	20	ball valve		

Handling Precautions

- Appropriate pressure range in duct
 - 13A gas -0.5~+0.2kPa (13A gas)
 - LP gas -0.5~+0.5kPa (LP gas)
- If the wind speed inside the duct is out of the proper range, it is necessary to add the corresponding pressure to the blower and gas supply pressure.
- Suitable wind speed range in duct 5m/s~20m/s
- Notes on duct installation
 - Air Heater Inlet side duct length 500 mm or more
 - Outlet duct length 1000 mm or more

