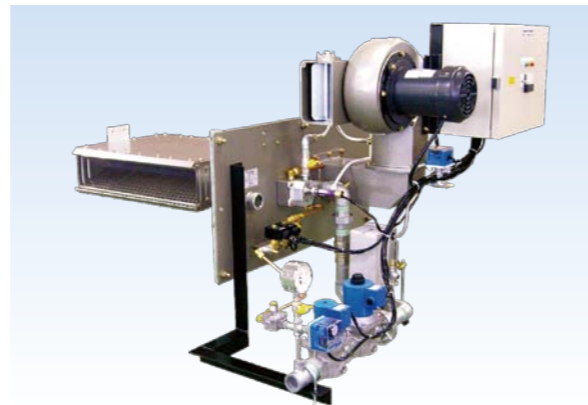




It is a type of burner that integrates all of the burner functions and inserts it into the duct. It is a package type burner which burns in the duct.

Feature

- 1 KGD-20S and above has independent pilot, you can take turn down greatly at the burner.
- 2 Heat resistant material (SUS 310 S) is used for the combustion head, so it is excellent in durability.
- 3 The blowing direction of the flame, can be specified.



Note) Please contact us for dimensions

Specifications

Model	KGD-5S	KGD-10S	KGD-20S	KGD-30S	KGD-5PVS	KGD-10PVS	KGD-20PVS	KGD-30PVS	
Control method	ON-OFF				PID DC4~20mA				
Combustion capacity (kW)	46	116	233	349	46	116	233	349	
Gas quantity (m ³ /h)	LPG	1.7	4.2	8.3	12.5	1.7	4.2	8.3	12.5
	13A	3.6	9.1	18.2	27.3	3.6	9.1	18.2	27.3
	6C	—	22.2	44.4	66.7	—	22.2	44.4	—
Motor output (kW)	0.03	0.25	0.25	0.4	0.03	0.25	0.25	0.4	
Ignition method	Direct ignition method		Pilot ignition method		Direct ignition method		Pilot ignition method		
Combustion method	premixing method								
Detection method	flame rod								
Wind pressure check	Air flow switch		Wind pressure switch		Air flow switch		Wind pressure switch		
Gas connection size (Rc)	LPG	3/8	1/2	3/4	1	3/8	1/2	3/4	1
	13A	1/2	3/4	1	1 1/2	1/2	3/4	1	1 1/2
	6C	—	1 1/4	2	2	—	1 1/4	2	2

Model	KGD-10PMS	KGD-20PMS	KGD-30PMS	KGD-50PMS	KGD-75PMS	
Control method	PID 135Ω					
Combustion capacity (kW)	116	233	349	581	872	
Gas quantity (m ³ /h)	LPG	4.2	8.3	12.5	20.8	31.3
	13A	9.1	18.2	27.3	45.5	68.2
	6C	22.2	44.4	66.7	111.1	—
Motor output (kW)	0.25	0.25	0.4	0.75	1.1	
Ignition method	Direct ignition method	Pilot ignition method				
Combustion method	premixing method					
Detection method	flame rod			Ultraviolet phototube		
Wind pressure check	Wind pressure switch					
Gas connection size (Rc)	LPG	1/2	3/4	1	1 1/4	1 1/2
	13A	3/4	1	1 1/2	1 1/2	2
	6C	1 1/4	2	2	3	—

*City gas specification w/governor (however, 581 kW or more is nothing)
 *City gas specification without flexible hose
 *LPG specification without governor
 *LPG specification w/governor (however, 581 kW or more is nothing)