



Small type air heater(Mini-Heater)

# Mini Heater

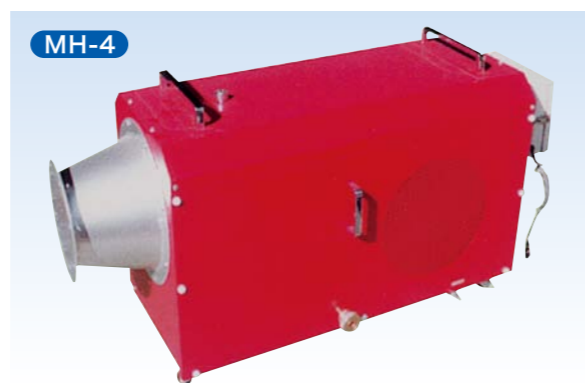
MH-4,7LW

MH-4,7LW Mini Heater

## Easy-to-use air heater only by connecting gas and electricity.

### Feature

- 1 Small capacity, simple type air heater.
- 2 Automatic ignition with one switch.
- 3 Gas capacity can be easily adjusted with knob.
- 4 Since it has a pilot burner, automatic temperature control can be performed by ON / OFF of the main burner.
- 5 Standard operation panel with built-in safety combustion circuit by frame rod detection method is attached.



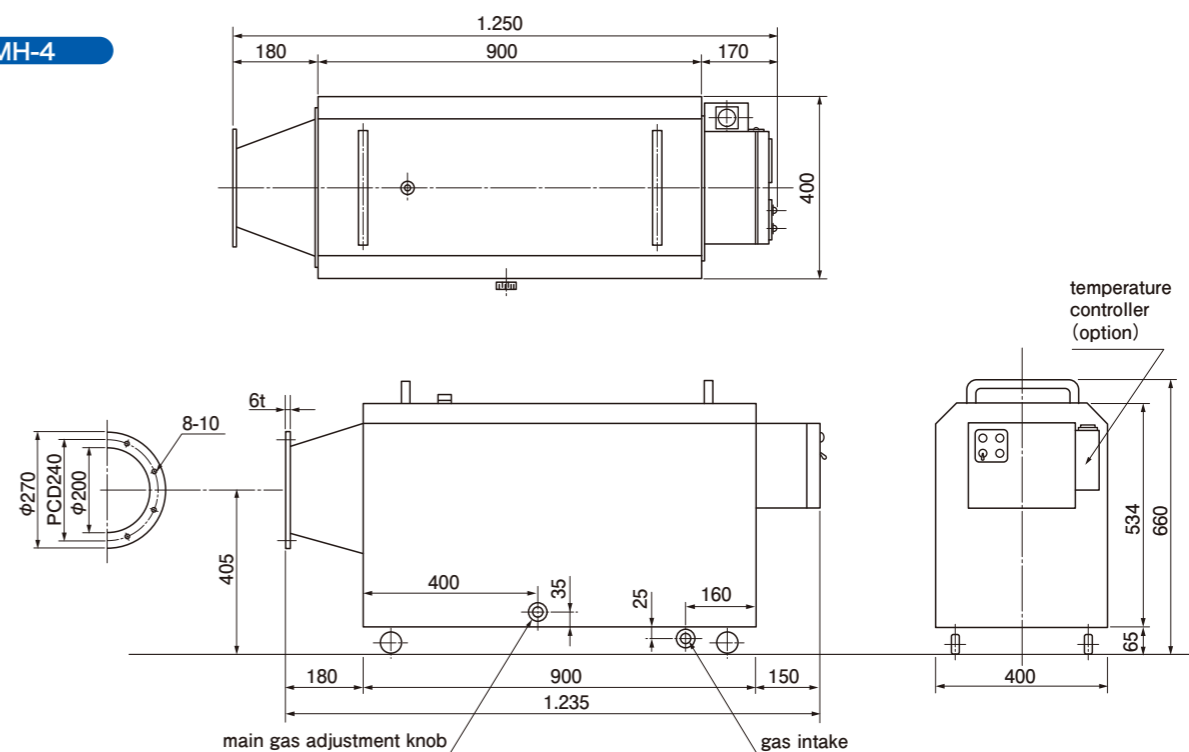
### Specifications

Model	MH-4	MH-7LW
Combustion capacity (kW)	47	82
Blowoff air flow rate (Nm <sup>3</sup> /min)	12	30
Blowoff wind pressure (kPa)	0.17	0.18
Hot air blowoff temperature (°C)	100~200	70~200
Power source (kW)	AC100V Single phase	AC200V 3 phase
	0.2	0.45
Flame detection method	Built-in frame rod detection relay	

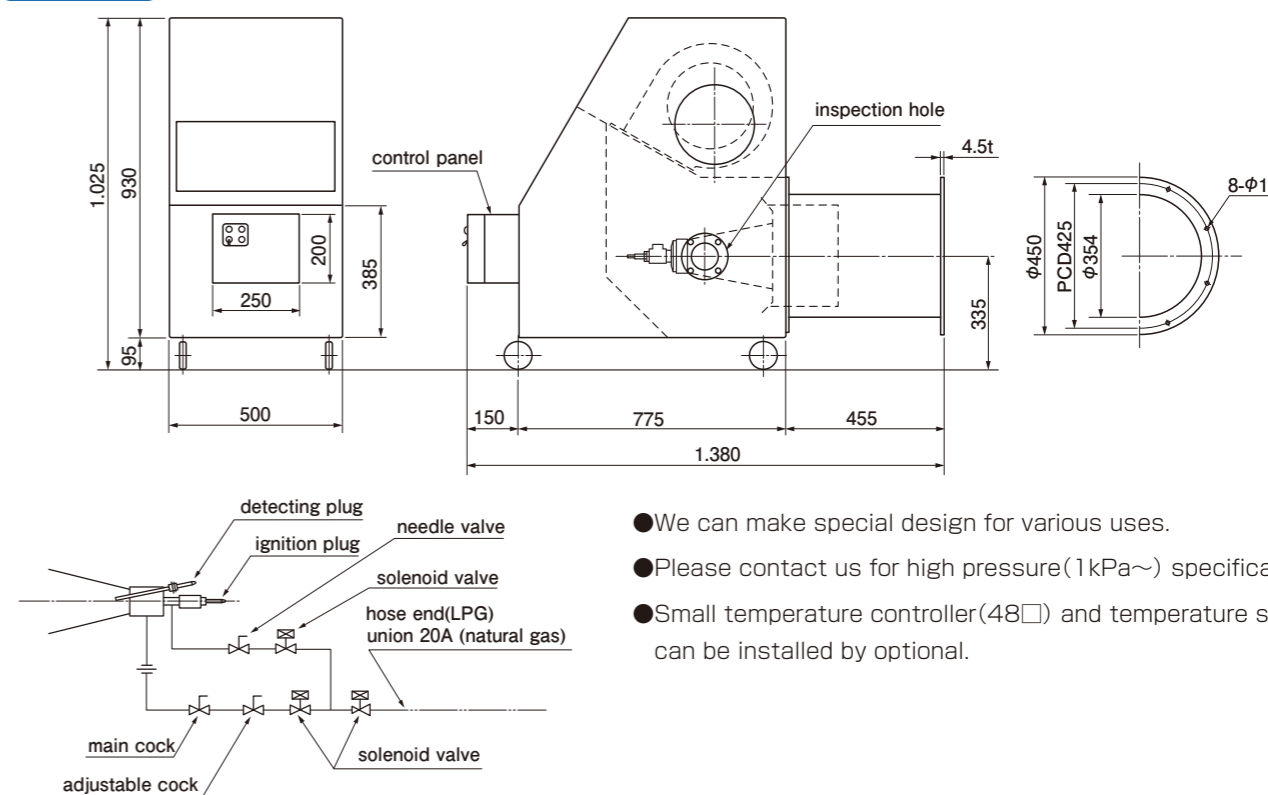
※ MH is blowoff only

### Overall size

» MH-4



» MH-7LW



- We can make special design for various uses.
- Please contact us for high pressure(1kPa~) specifications.
- Small temperature controller(48□) and temperature sensor can be installed by optional.

### Handling Precautions

- 1 When connecting on the hot air outlet side, please pay attention to furnace pressure · duct pressure loss etc. (Please consult sales staff of our company)