



Burner top

Straight flame burner

SF-15,20,25,32,40,50,80

The flame is a very steady straight flame burner.

Feature

- 1 Because the frame retention mechanism is adopted, the flame is very stable.
- 2 High speed air flow is obtained, and the flame temperature is high.
- 3 When used in combination with a venturi mixer, it is easy to control the air-to-fuel ratio.
- 4 It can also be used for Bunsen mixed combustion type.

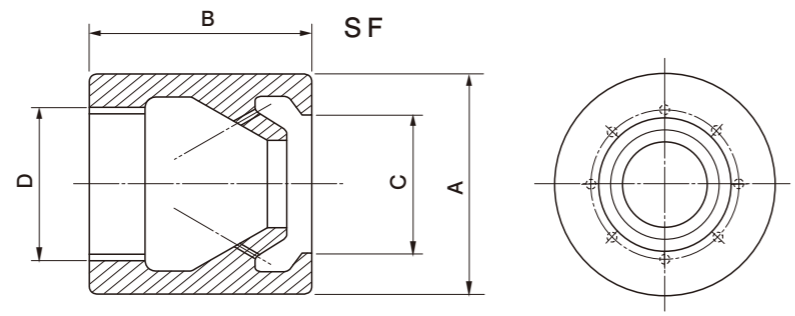


Main Usage

- Liquid heating equipment · Metal heating · Incinerator · Ceramic furnace



Specifications · Dimensions

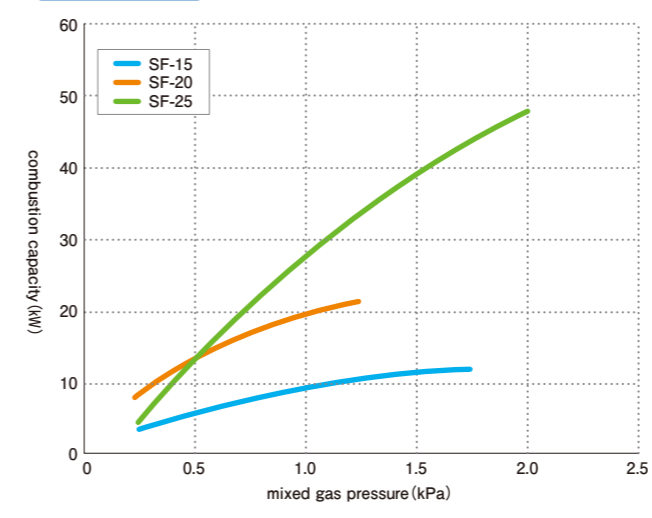


Model	SF-15	SF-20	SF-25	SF-32	SF-40	SF-50	SF-80(※)		
Standard combustion capacity(kW)*	9.4	17.4	34.9	48.9	69.8	139.6	383.8		
Standard mixed gas pressure(kPa)	1.1	0.8	1.3	1.0	0.8	1.5	1.3		
Overall size (mm)	A(φ)	36	40	54	62	68	112		
	B	36	40	50	60	68	110		
	C(φ)	20	24	30	38	42	72		
connecting size(Rc)	D(mixed gas)		1/2	3/4	1	1 1/4	1 1/2	2	3

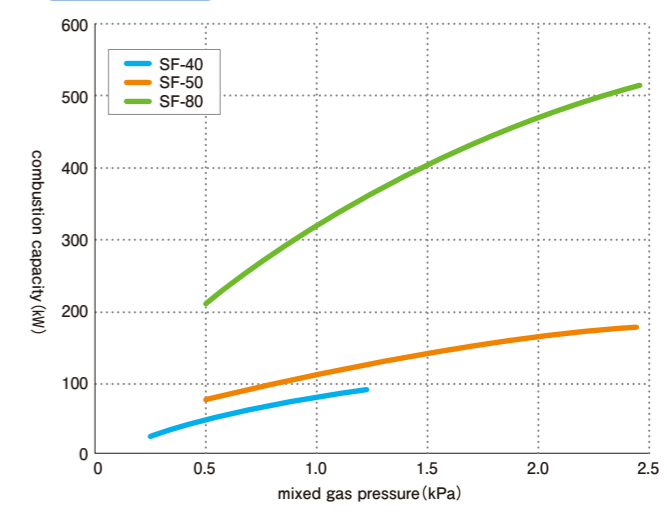
※blast combustion

Relationship between gas volume and mixed gas pressure

SF-15,20,25



SF-40,50,80



Handling Precautions

- 1 When used in combination with a venturi mixer, make piping to the burner as short as possible and minimize pressure loss.
- 2 When used in the Bunsen type, primary and secondary air should be sufficiently sucked.

Material

- SF15~50 : (cast iron)
- SF80 : (※ Made-to-order production for stainless steel cutting products)